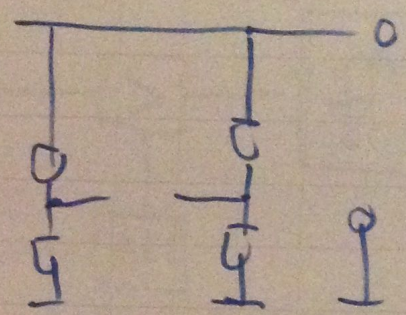


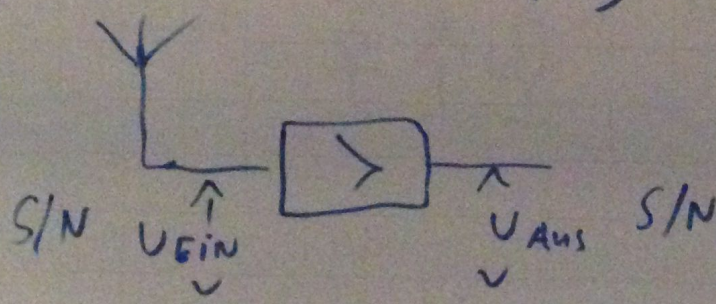
0,01 %

28,000 MHz



7,0	14,0	21,0	28 MHz
Grundfr.	1.0W	2.0W	3.0W
1. Horn.	2. Horn.	3. Horn.	4. Horn.

$IP_3$  (+30dBm)



$$\gamma = \frac{S/N_{Ein}}{S/N_{Aus}}$$

$$F_{[dB]} = 10 \cdot \log \frac{S/N_{Ein}}{S/N_{Aus}}$$

