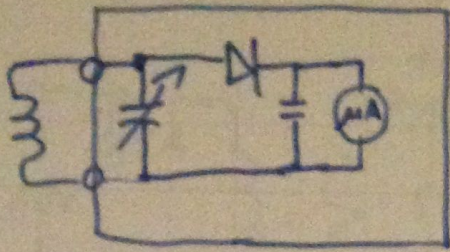
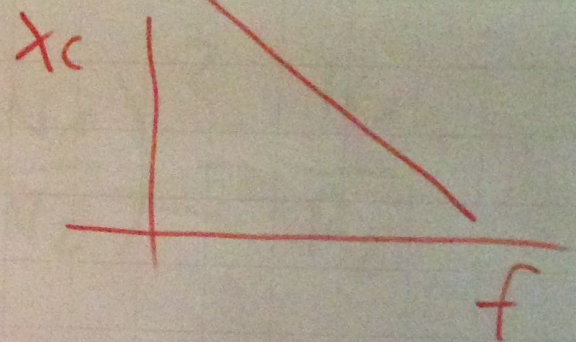
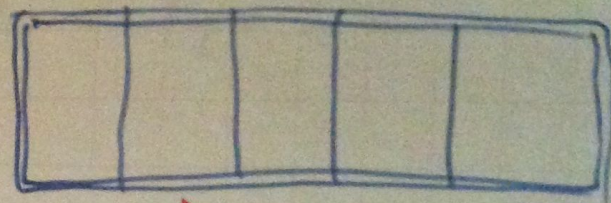
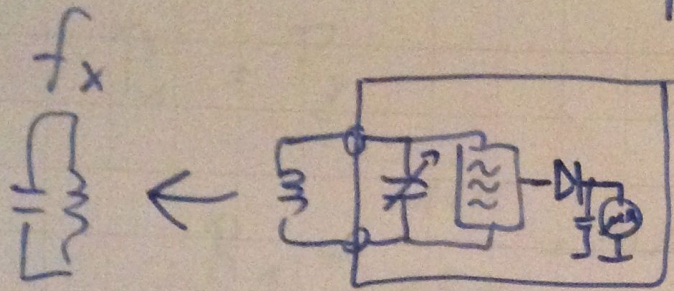


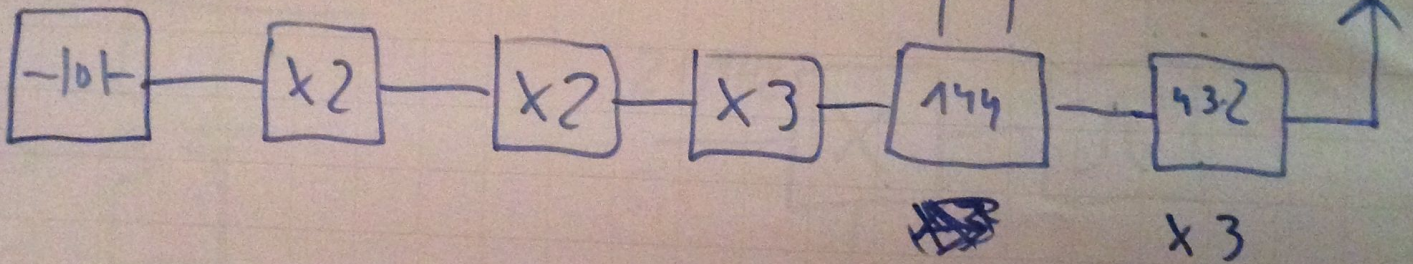
Absorptionsfrequenzmessung



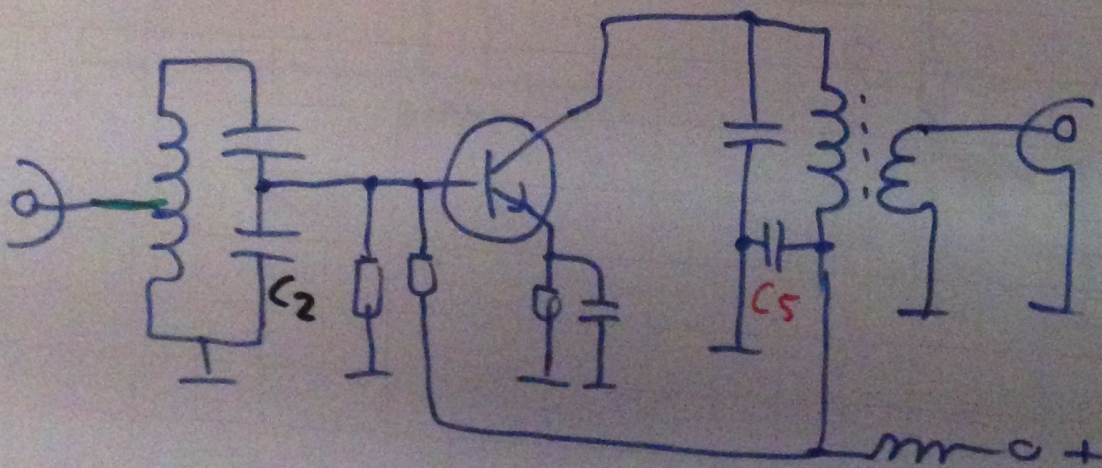
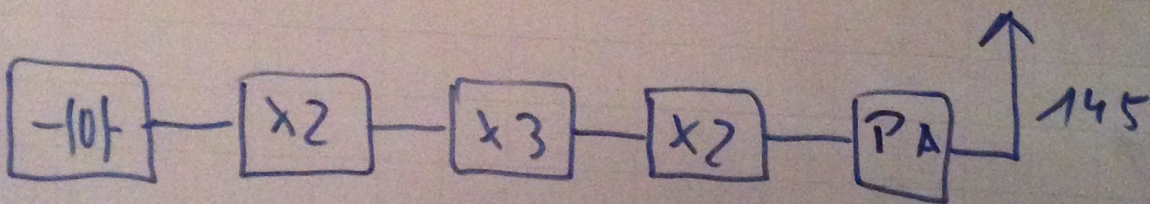
Gitterlippe



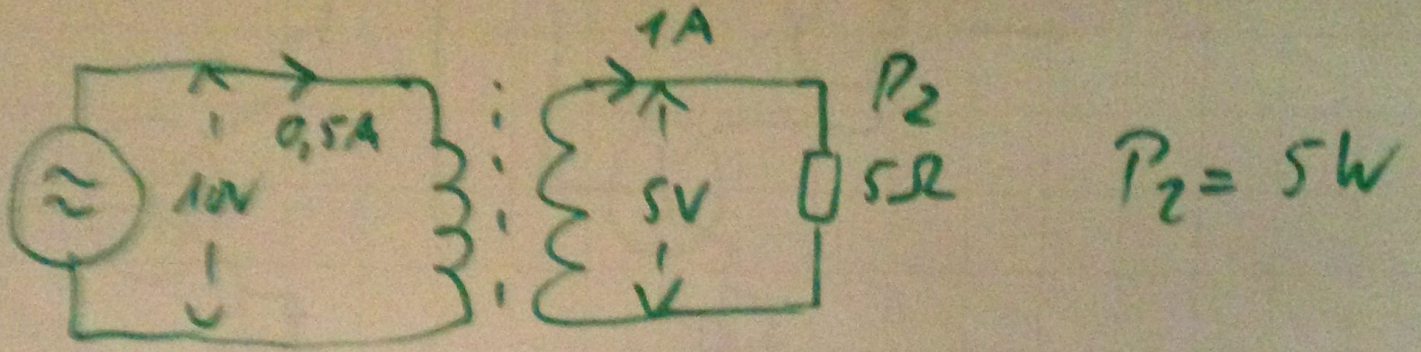
12 MHz



12,083



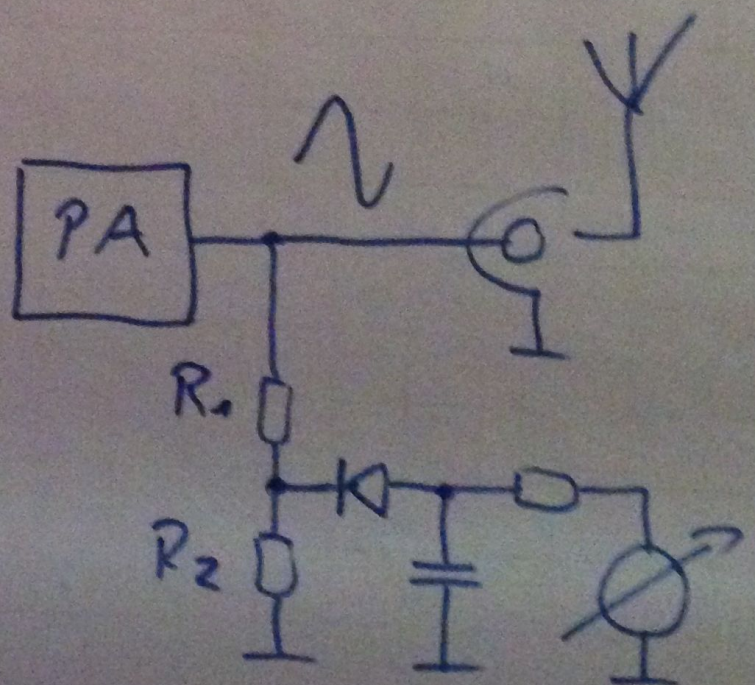
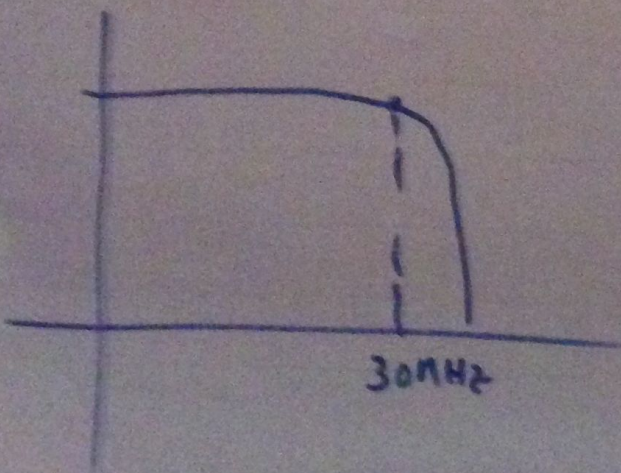
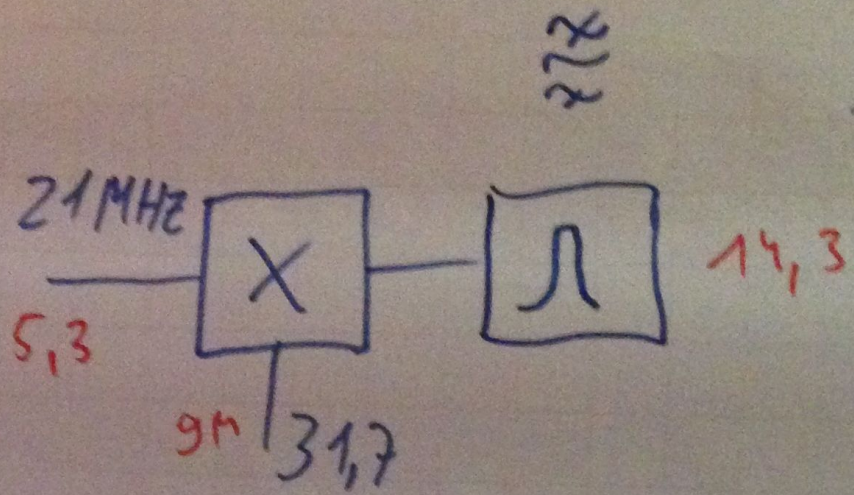
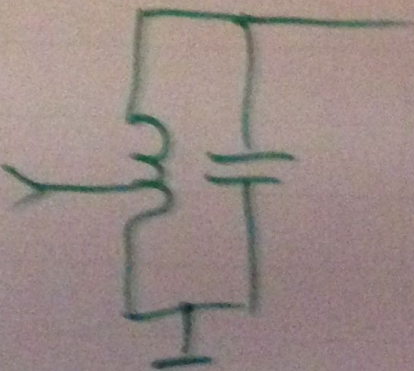
$N_1 = 100V$ $N_2 = 50V$

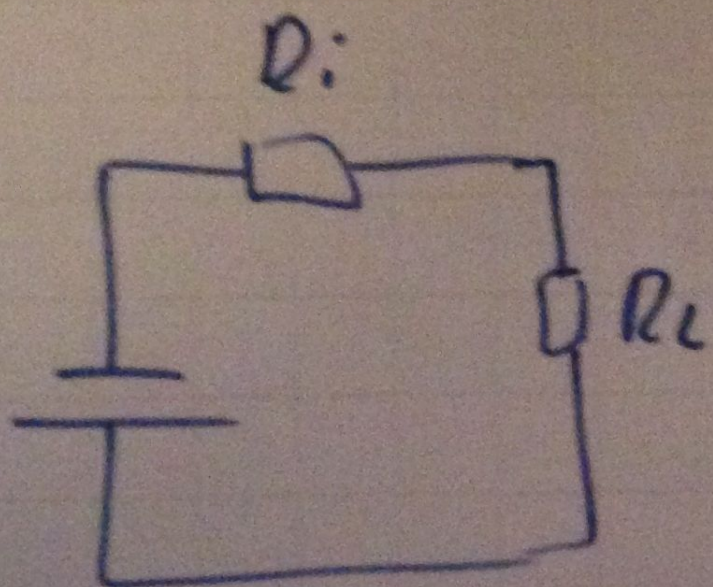
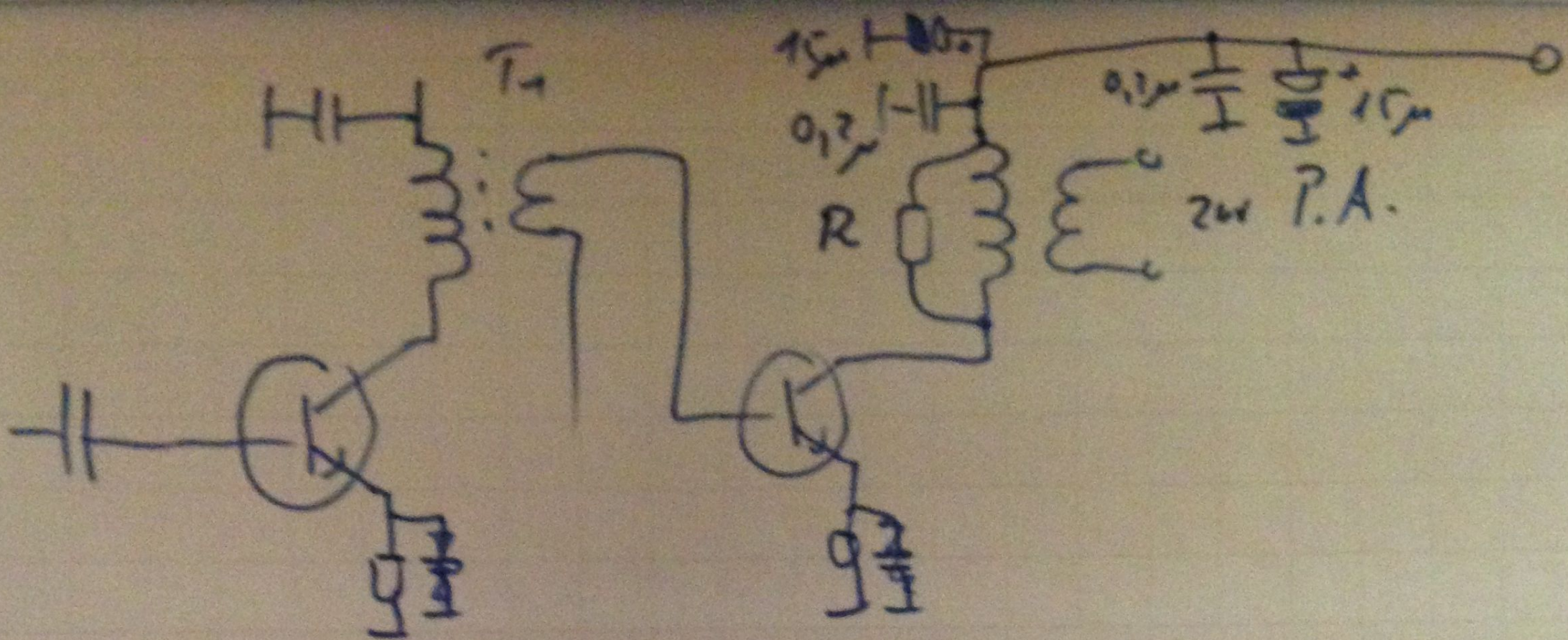


$P_1 = P_2$

$R_1 = \frac{100V}{0,5A} = 200\Omega$

$\left(\frac{N_1}{N_2}\right)^2 = \frac{R_1}{R_2}$





$$R_i = R_L$$